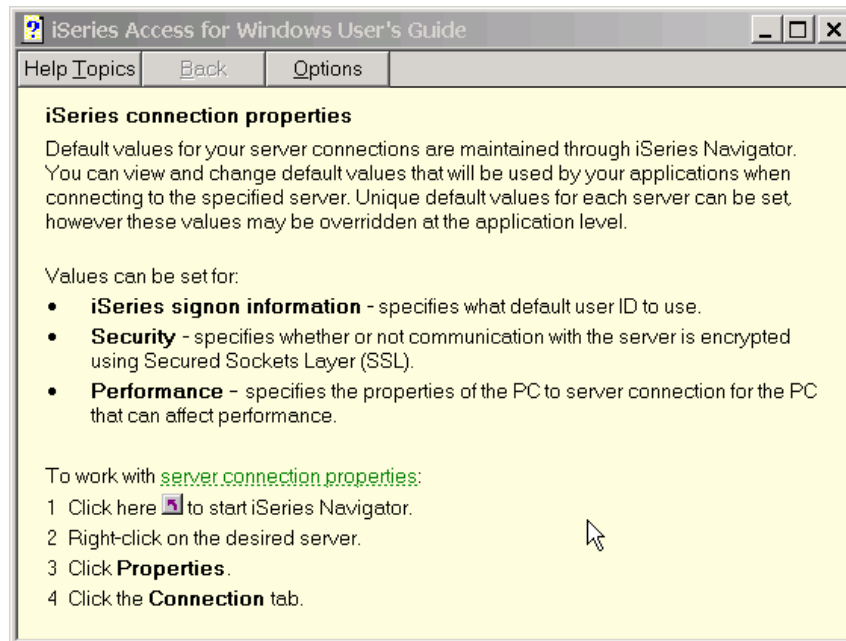


How to change the iSeries Access connection properties to prompt every time

IBM iSeries Access connection properties are set the first time you connect to your iSeries. After that, the iSeries Access configuration on your PC stores your signon preferences.

When developing PC based applications, it is usually advantageous to be prompted for signon information every time an application connects to the iSeries. That way, you can try various combinations of signon user IDs and test signon failures, without needing to reboot your PC to reset the connection.

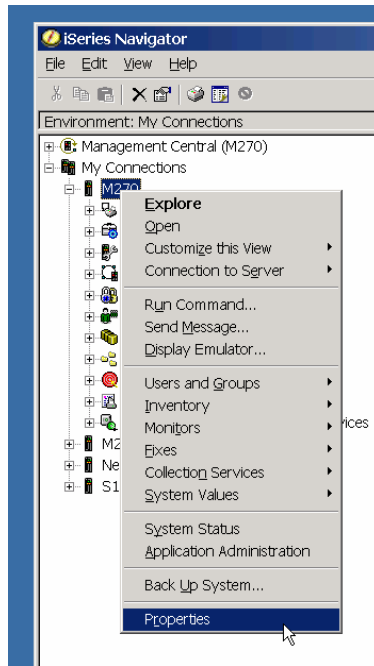
The iSeries Access connection properties are set in the iSeries Navigator, as described in the excerpt from the iSeries Access Help file (Figure 1).



faq001

Figure 1: The iSeries Access connection properties are described in the Help file.

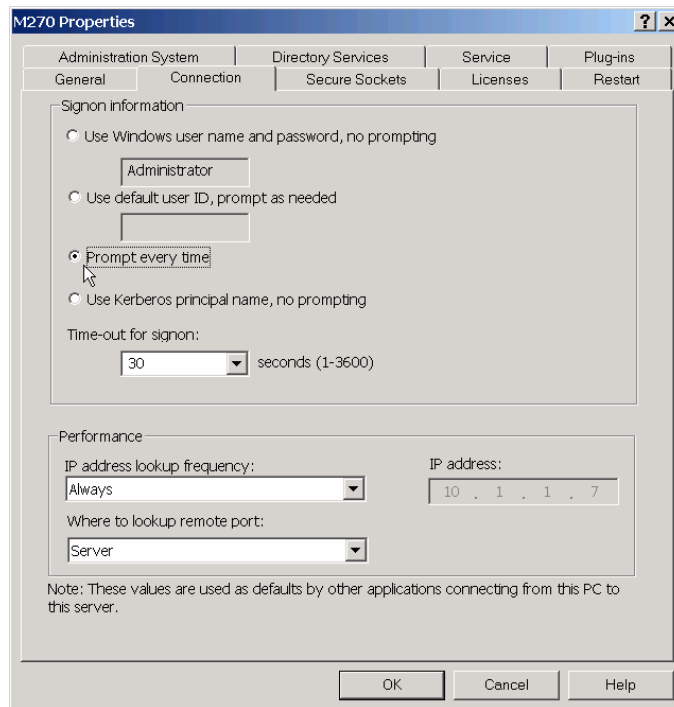
To change your connection properties, start the iSeries Navigator on your PC. Expand the My Connections item, then right-click on the iSeries server that you want to set connection properties for. Click the Properties item in the pop-up menu, as shown in Figure 2.



faq002

Figure 2: Right-click the iSeries server name and select Properties from the pop-up menu.

In the Properties dialog, click the **Connection** tab. Select the **Prompt every time** option as shown in Figure 3. Click the **OK** button to close the dialog. You may want to reboot your PC to ensure that all open connections to the iSeries will be closed and the connection properties reset.



faq003

Figure 3: Select the Prompt every time option on the Connection tab.